

YP-U3 DFU Update

(Recovery Update)

- When DFU update is needed
- when normal update is impossible
- when the set can't power on
- when the set operates abnormally.

When DFU update(recovery update) is needed?

1. Symptom

- Power on/off doesn't work.
- YP-U3 doesn't connect to computer when insert USB.
- Display is not normal. .
- You can not access removable Disk (YP-U3).

2. Solution

A. General F/W Upgrade

B. Recovery F/W Upgrade (DFU Upgrade)

- Firmware has damage or work abnormally.

Step 1. DFU USB driver Install

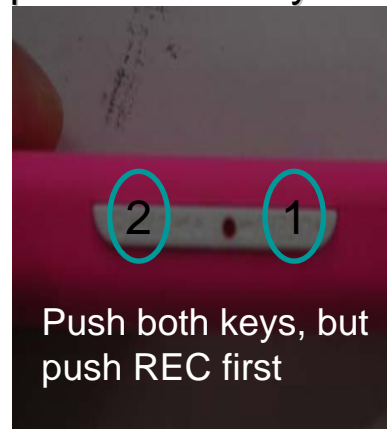
(Step 1~ 2 is need only on first installation)

1. Connect YP-U3 as DFU device

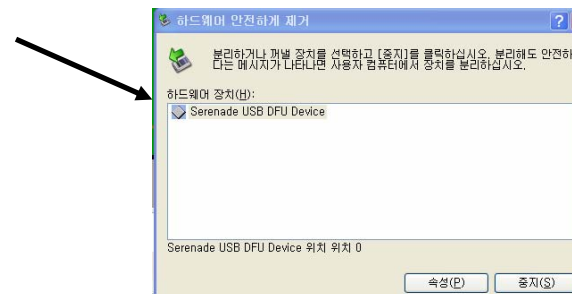
- ① While pushing **“REC”** key and **“Start”** Key at same time, connect YP-U3 to USB port on PC.

- When Push both two keys (“REC”, “Start”) , push “REC” key first ,or you will fail DFU device install because YP-U3 will power on. And check “Hold” key is off.

When “Hold” key is on, if you push “REC” key and ”Start” key, YP-U3 will be reset.



※ When you see right message, you don't need to keep pushing keys.



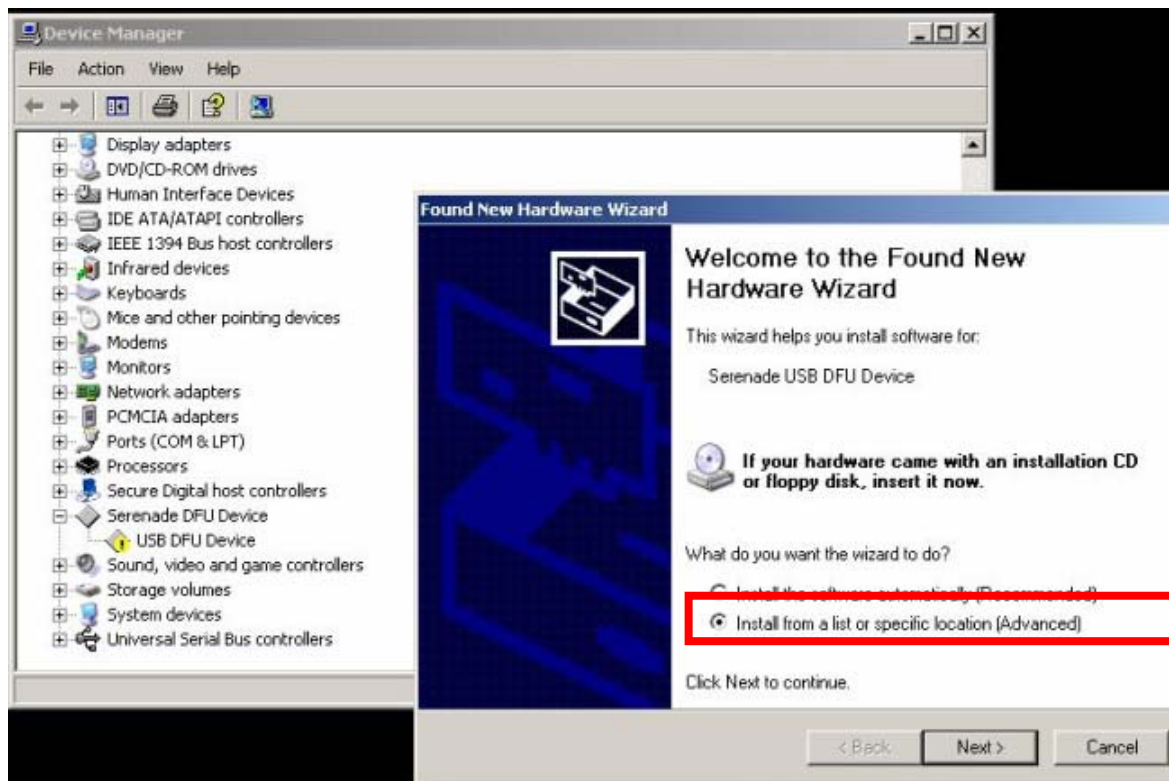
Step 1. DFU USB driver Install

(Step 1~ 2 is need only on first installation)

2.Unzip “Serenade_DFU.zip” file.

3.Connect YP-U3 as DFU device, then PC will search DFU driver.(refer page 3)

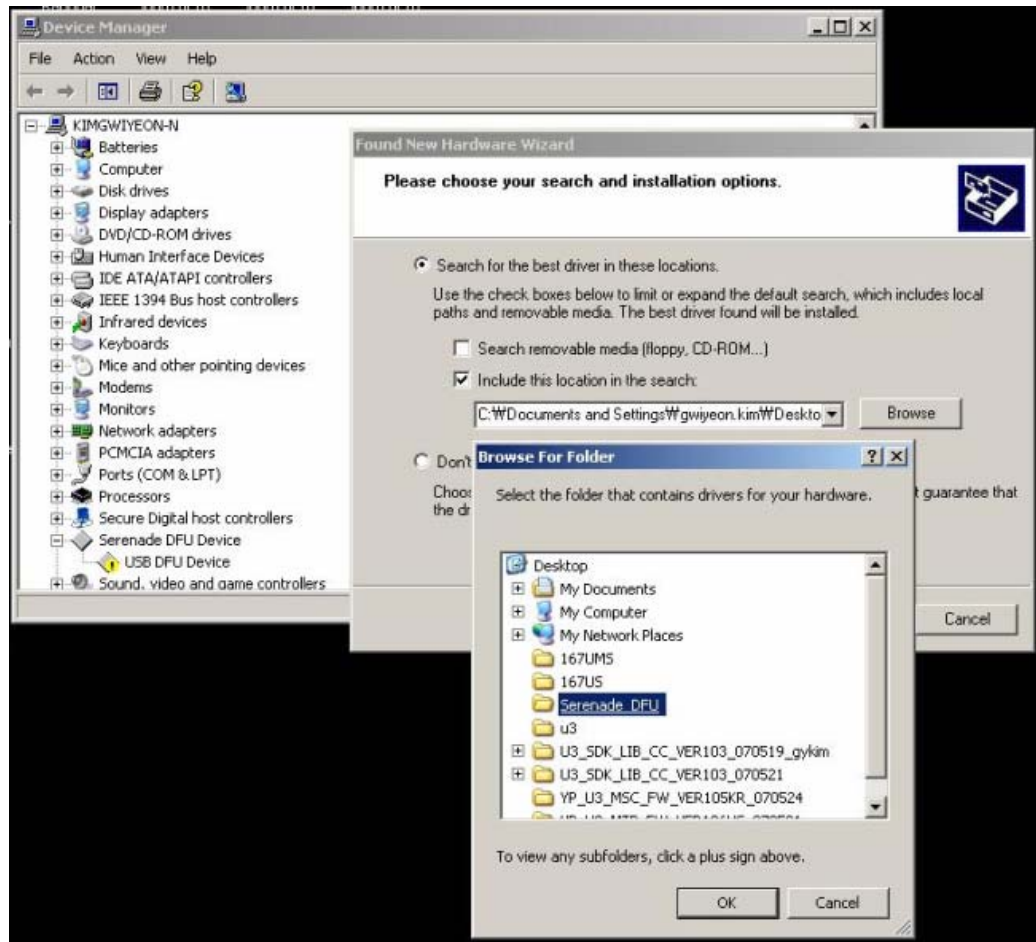
4.Select as below picture. (Install from a list or specific location [Advanced])



Step 1. DFU USB driver Install

(Step 1~ 2 is need only on first installation)

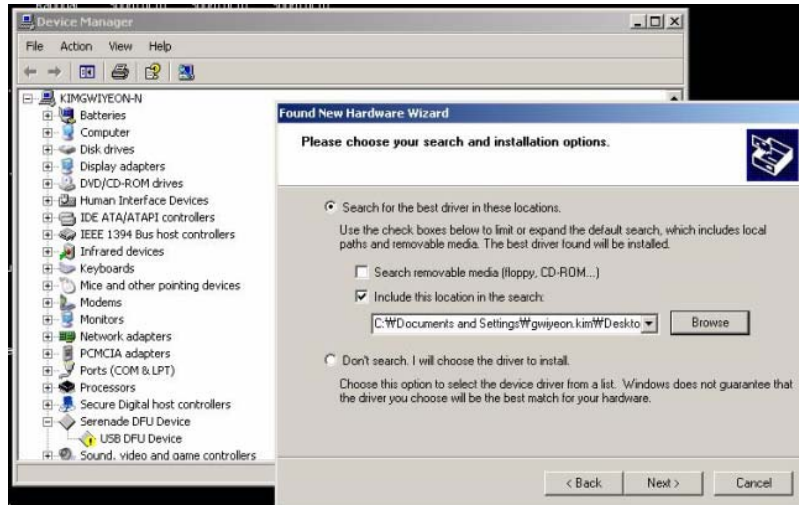
5. Select as below picture, and push “Browse” then select “Serende_DFU” folder. (“Serenade_DFU” folder located on the folder where you unzip “Serenade_DFU.zip” file.)



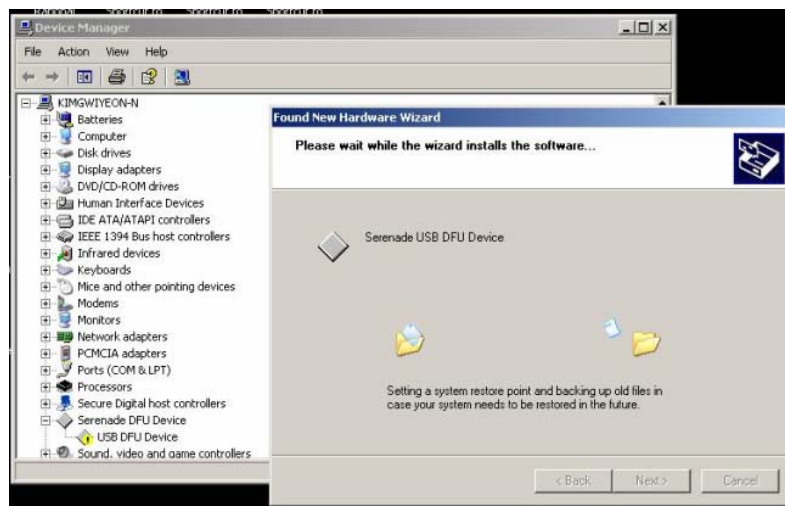
Step 1. DFU USB driver Install

(Step 1~ 2 is need only on first installation)

6. Push Next button.



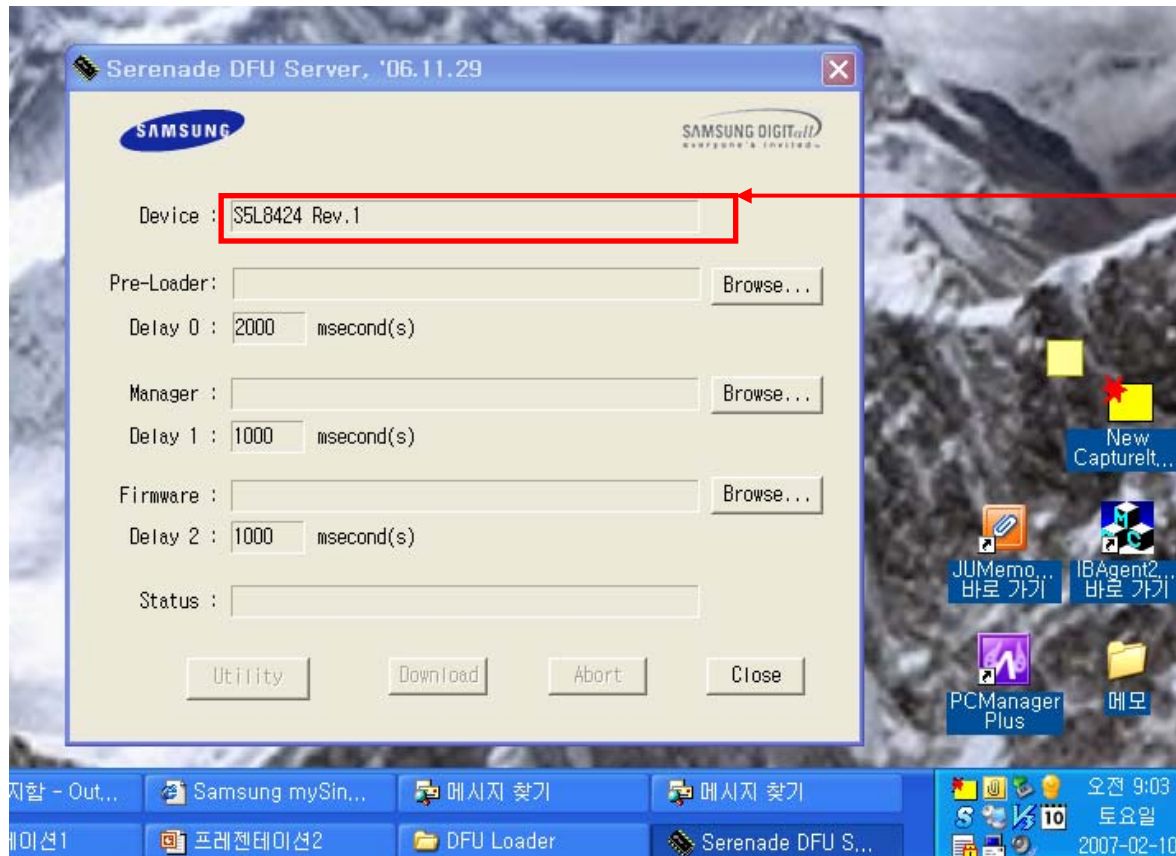
7. Install USB DFU Device automatically and then push Finish button.



Step 2. 1st DFU update

(Step 1~ 2 is need only on first installation)

8. Execute “Serenadedfu.exe” file in “Serenade_DFU” folder.
If “Failed to open file” error message popes up, just ignore.

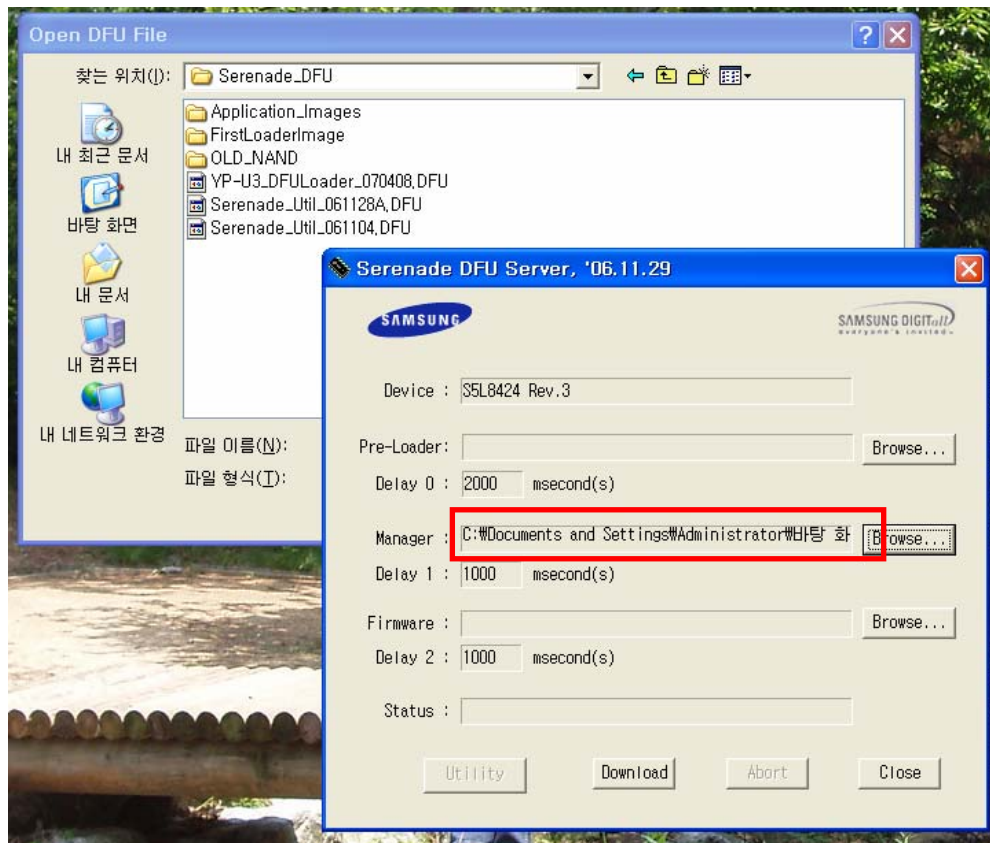


If DFU device connect to PC normally, this message(S5L8424 REV**) will be on “Device”.

Step 2. 1st DFU update

(Step 1~ 2 is need only on first installation)

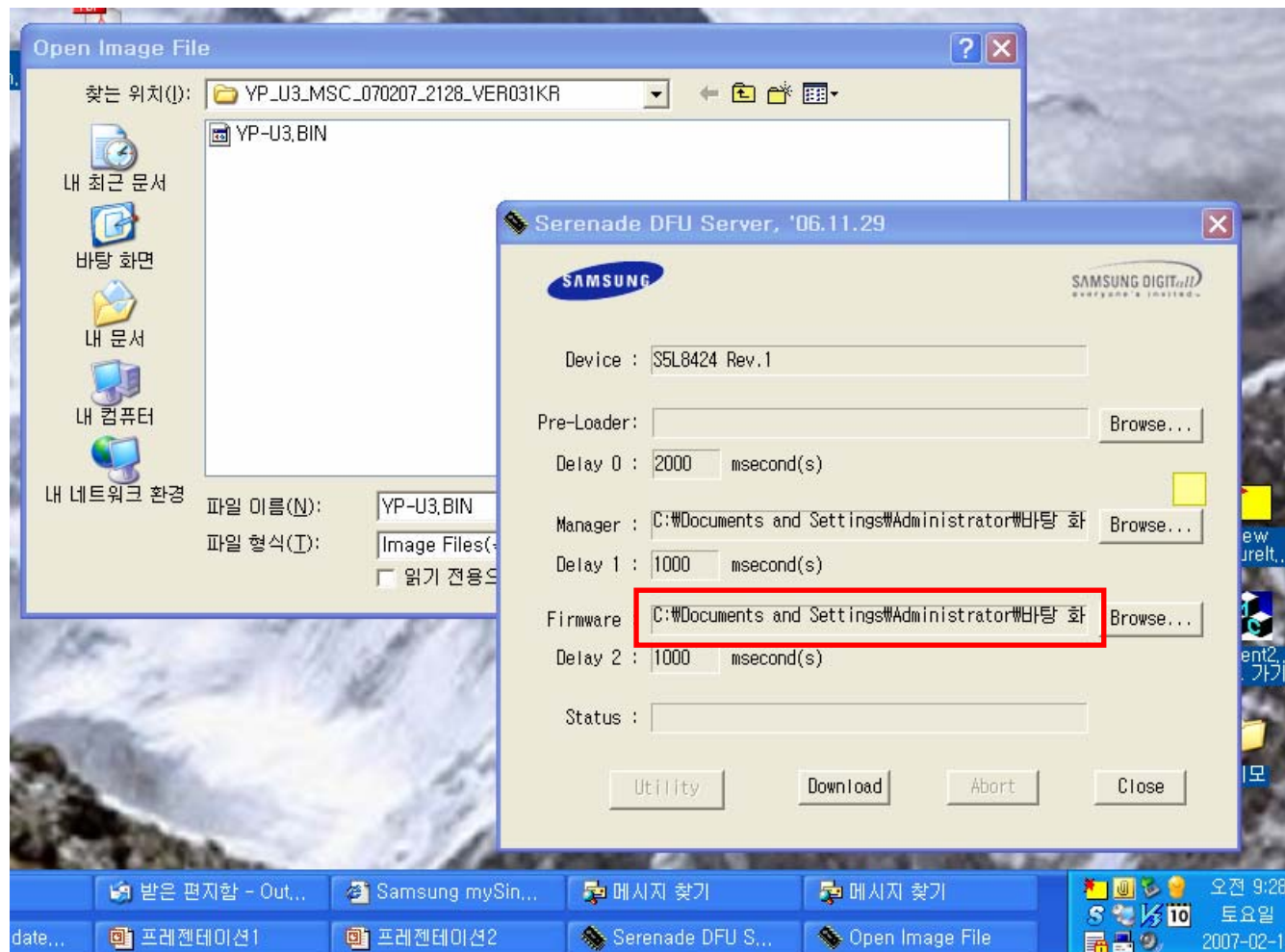
9. Push “Browser” on “Manager”,
and select “YP-U3_DFULoader_*****.DFU”file
in “Serenade_DFU” folder.



Step 2. 1st DFU update

(Step 1~ 2 is need only on first installation)

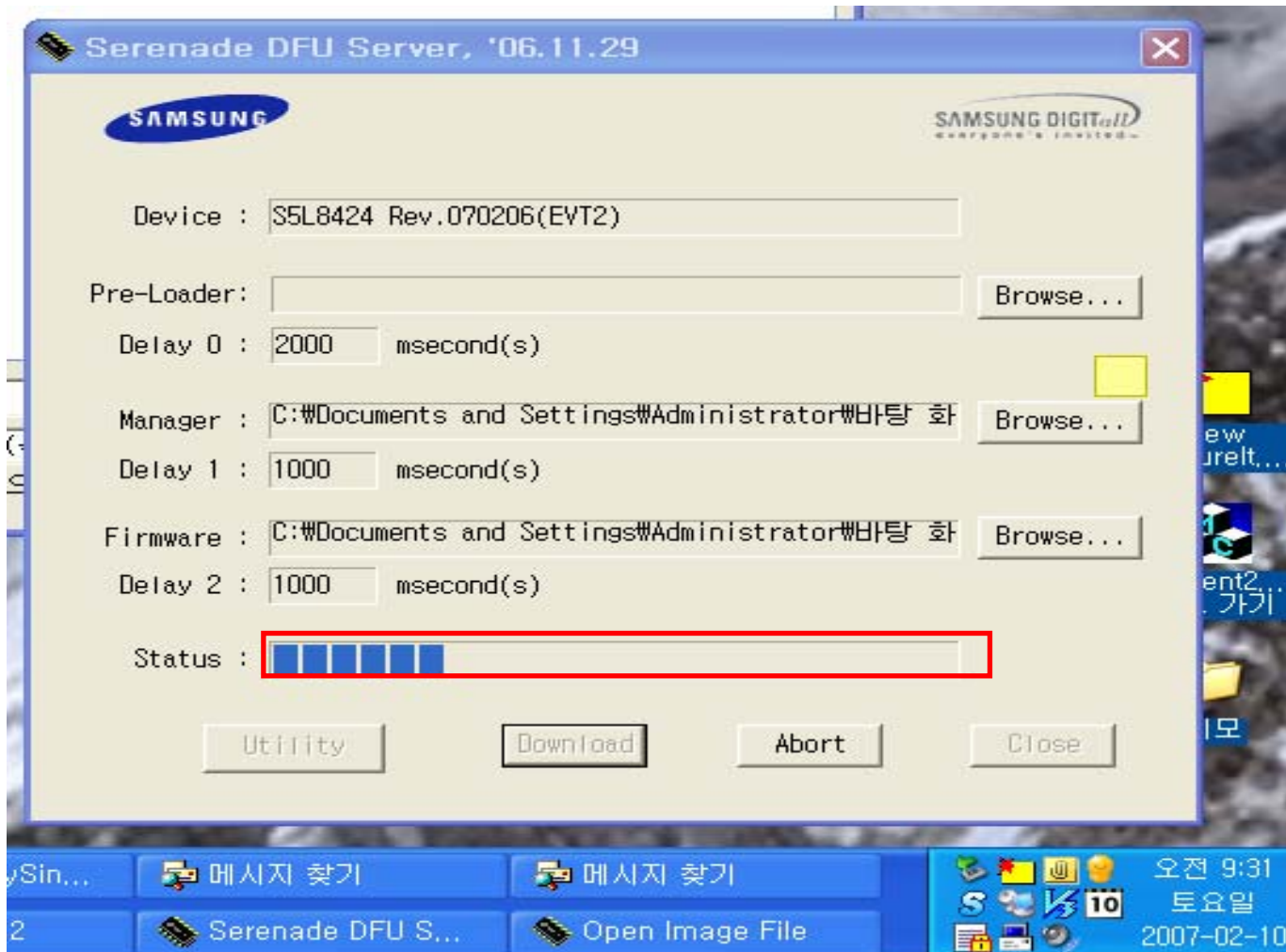
10. Push “Browse..” on “Firmware”, and select “YP-U3.BIN(or YP-U3J.BIN)”file in Firmware folder where you unzip.



Step 2. 1st DFU update

(Step 1~ 2 is need only on first installation)

11. Push “Download” and confirm the status bar.



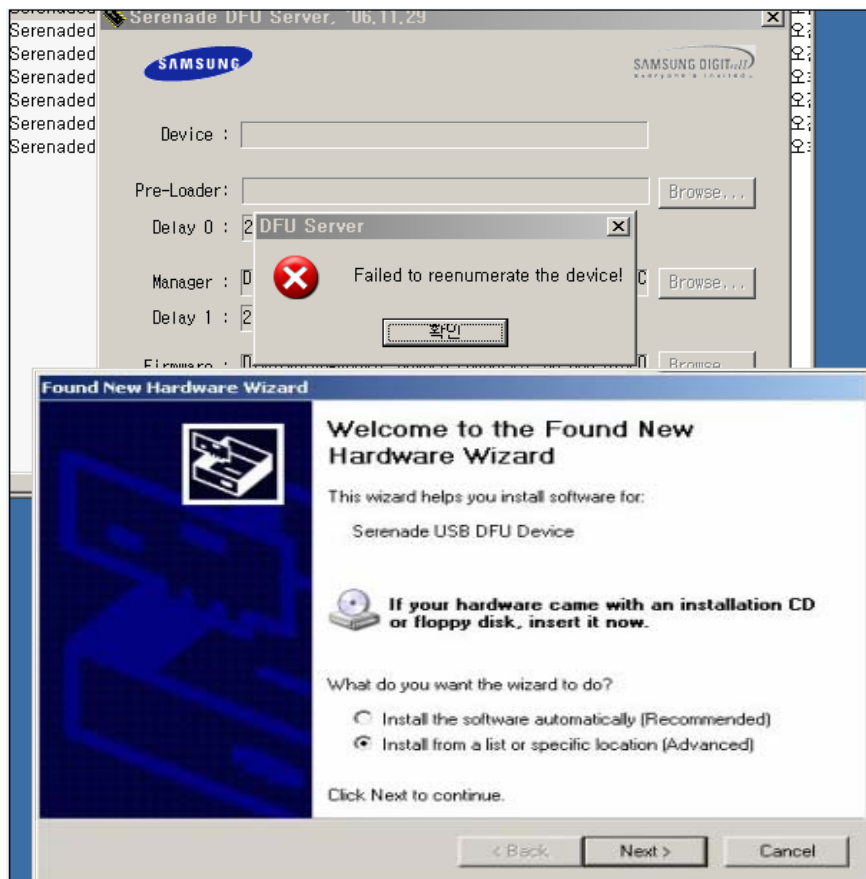
Step 2. 1st DFU update

(Step 1~ 2 is need only on first installation)

12. Below message will pop up

13. Select like below picture.

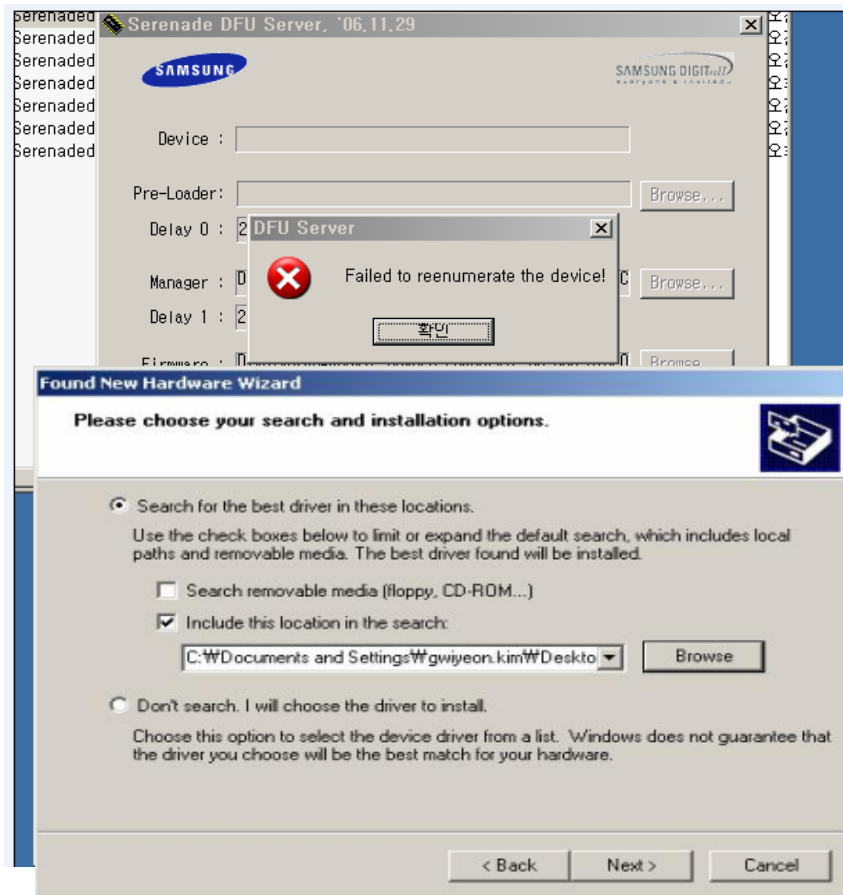
(Install from a list or specific location [Advanced]).



Step 2. 1st DFU update

(Step 1~ 2 is need only on first installation)

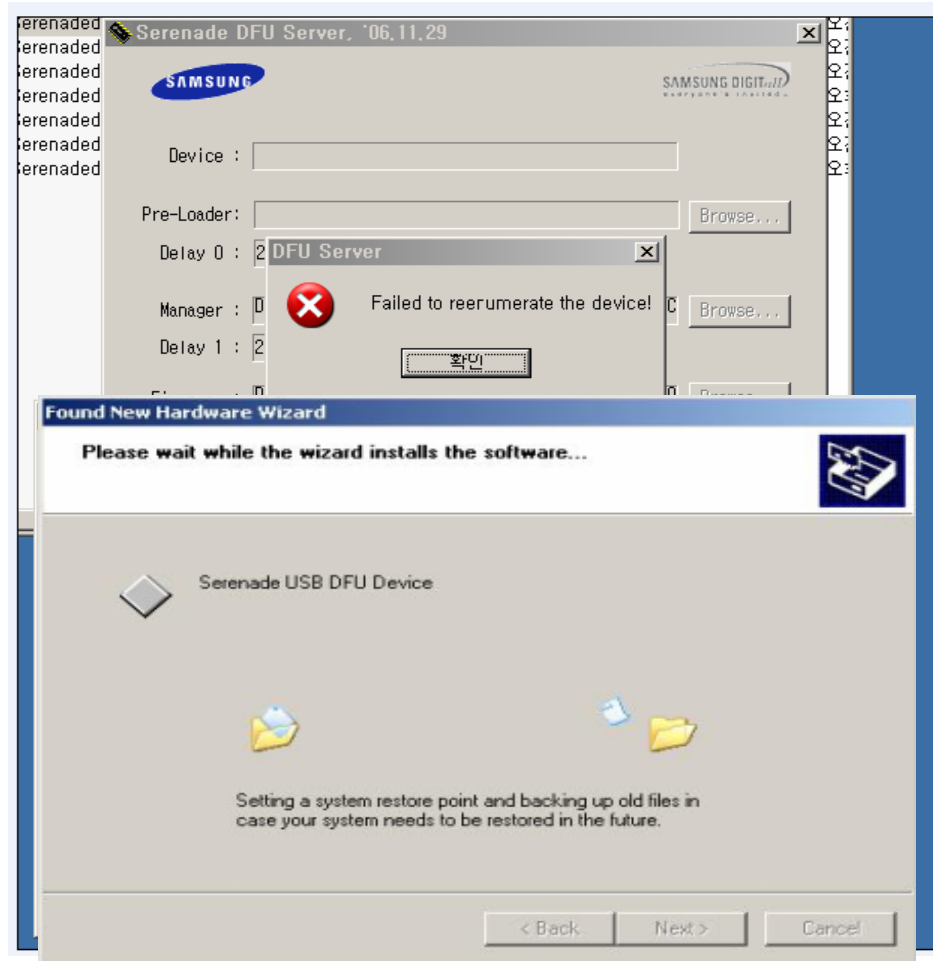
14. Select like a below picture, and push “Browse” then select “Serende_DFU” folder. (“Serenade_DFU” folder located on the folder where you unzip “Serenade_DFU.zip” file.)



Step 2. 1st DFU update

(Step 1~ 2 is need only on first installation)

15. Wait finishing install.



Step 2. 1st DFU update

(Step 1~ 2 is need only on first installation)

16. After below picture, and push “Finish”

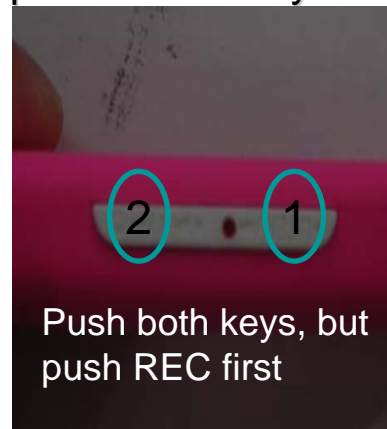
17. Disconnect YP-U3 from PC.



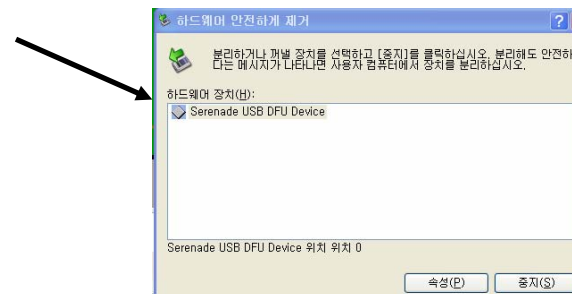
Step 3. 2st DFU update

18. Connect YP-U3 as DFU device

- ① While pushing **“REC”** key and **“Start”** Key at same time, connect YP-U3 to USB port on PC.
 - When Push both two keys (“REC”, “Start”) , push “REC” key first ,or you will fail DFU device install because YP-U3 will power on. And check “Hold” key is off. When “Hold” key is on, if you push “REC” key and ”Start” key, YP-U3 will be reset.

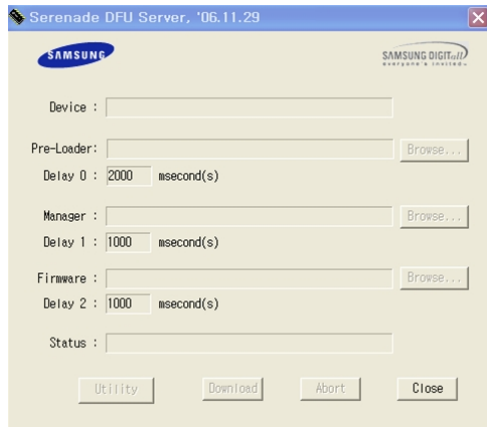


※ When you see right message, you don't need to keep pushing keys.

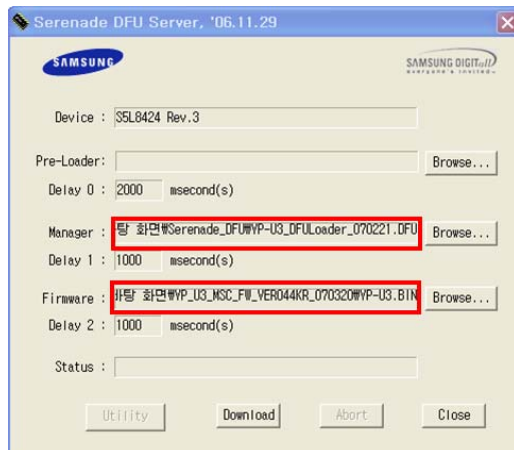


Step 3. 2st DFU update

19. Run Serenade DFU program (serenadedfu.exe)

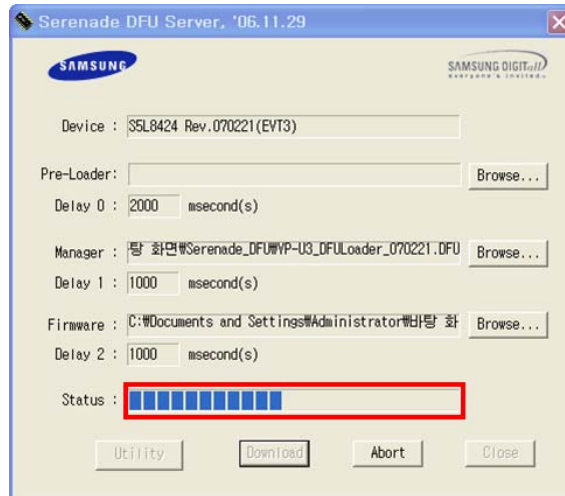


20. Click second Browse....and put “YP-U3_DFU Loader_*****.DFU” into Manager. Click third Browse... and put “YP-U3.BIN or YP-U3J.BIN” from firmware folder.



Step 3. 2st DFU update

21. Click download, and check status bar.



22. When finished, YP-U3 will display like below. Check this.

```
NAND: 1G MLC
DFU Writing...
Module checking...
OK
```

Step 3. 2st DFU update

23. And then, YP-U3 will display nothing for a minute.
Don't touch anything and keep USB connecting.
After 1~3 minutes, YP-U3 will appear in your PC. (Disk E or F....)
24. Put two files(YP-U3J.RSC & YP-U3,SET) in SYSTEM folder of "F disk"(YP-U3)
Separate YP-U3 from PC, and power on.
and then firmware will be updated.
 - download "Firmware Zip file" on SVC bulletin.(Check your country)